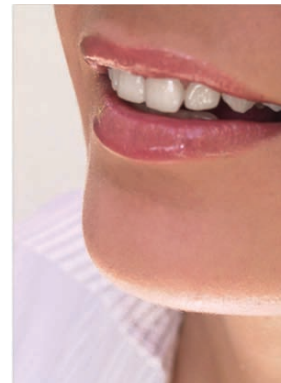


## DecisionBase Inc.

DecisionBase, Inc is a dentist-owned and dentist-controlled company that has been providing a suite of software products for the dental profession for over fifteen years. Its attributes the popularity of its software to a detailed understanding of dental practice operations and the collection of knowledge and experience gathered through a collaboration of experts across a wide spectrum of dental sciences. By listening to the customer before designing the software the solution was built to automate “the process” of the way dentists work.



In the early stages, the DecisionBase development team was successful in building the software to a certain point, but had limited resources and fewer skills with some of the newer technologies. They also had difficulty keeping up with customer demand for new features and functions. And struggled to meet benchmarks and milestones in the Software Development Life Cycle. They needed help.

DecisionBase partnered with Guilford Group to develop its next generation of software. “Guilford Group’s people, process and technical expertise combined with their proven methodology for software development was exactly what we needed to get to the next level” said Decision Base’s president, Paul Rhodes. “We don’t have to worry about the continuous cycles of training and certification required to take advantage of the latest development tools, and our core employees can focus more on business and customers.”

TiME for Dentistry provides clinical record and information management and sharing for Dental Specialists.

## Electronic Clinical Records for Periodontists

### Perio-Profile™

TiME’s Perio-Profile™ displays both numeric and graphical data, making both your decision-making and your patient’s understanding easier.

### Smart-Forms™

All narrative notes are created by filling out Smart-Forms™ check boxes or by selecting from lists to create more detailed records in less time! Smart-Forms™ includes 100 procedure-specific forms, all end-user modifiable.

